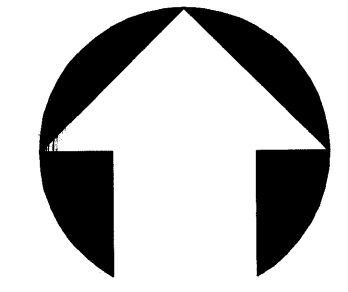


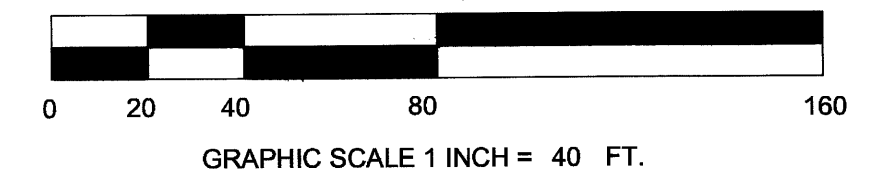
A Plat of

# SAVANNA DAKS

Being a Subdivision of the Northeast one-quarter (NE 1/4) of the Northeast one-quarter (NE 1/4) of the Northeast one-quarter (NE 1/4) of Section 21, Township 37 South, Range 41 East, Martin County, Florida



North



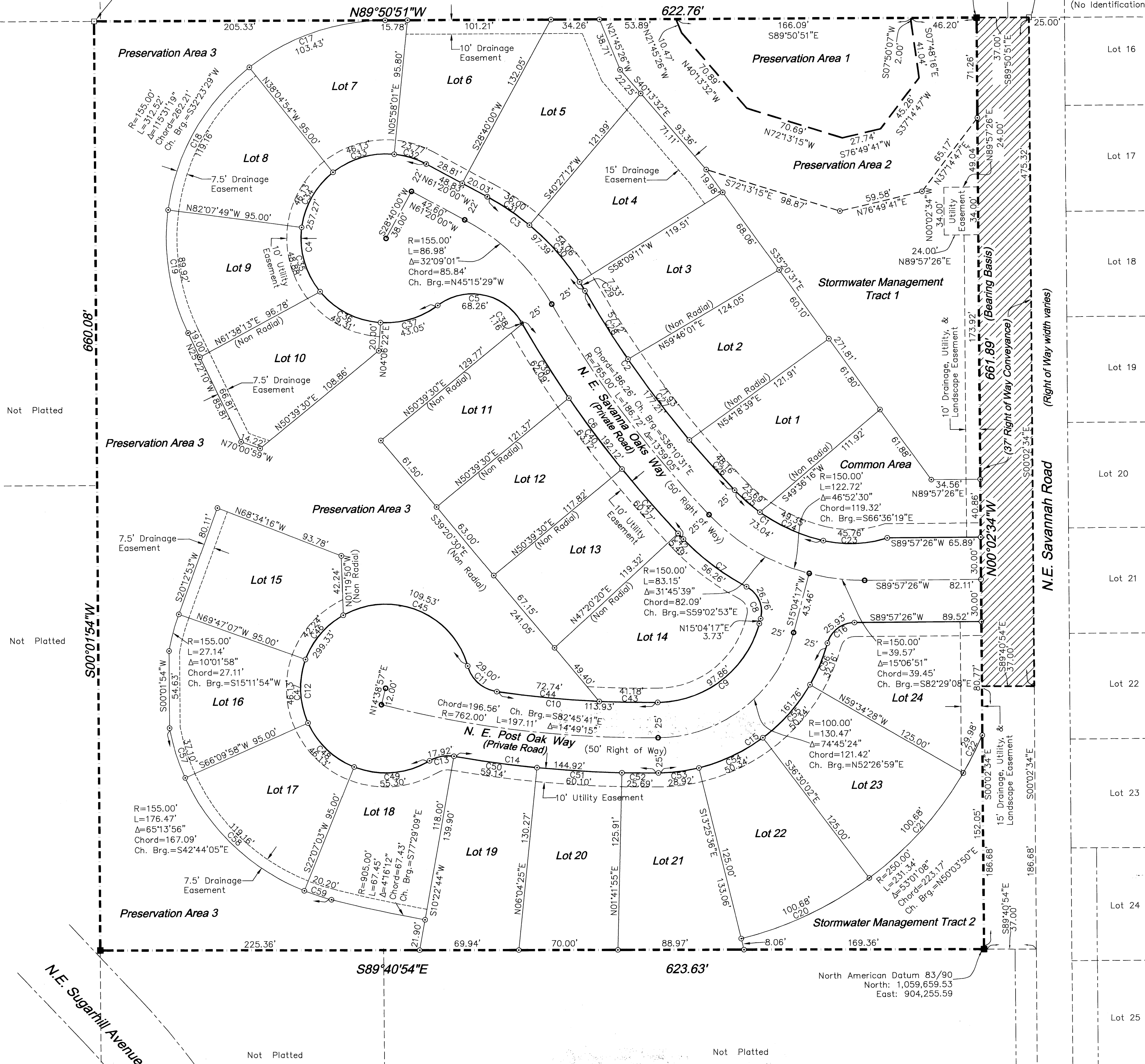
Sugarhill  
P.B. 07, Pg. 78  
Lot 1

Benchmark  
Elevation=26.02 Feet  
NGVD 1929  
Found 4"x4" Concrete  
Monument  
"#1272"

Not Platted

North American Datum 83/90  
North: 1,060,321.43  
East: 904,255.10

Benchmark  
Elevation=19.12 Feet  
NGVD 1929  
NE Corner of Section  
21, Township 37 South,  
Range 41 East  
Found 4"x4" Concrete  
Monument  
(No Identification)



Pitchford Minor Plat  
No. 1  
(Not Included Portion)  
Plat Book 05, Page 68

| Curve Table |         |         |            |         |
|-------------|---------|---------|------------|---------|
| Curve       | Length  | Radius  | Delta      | Chord   |
| C1          | 73.04'  | 125.00' | 33°28'44"  | 72.01'  |
| C2          | 177.21' | 740.00' | 13°43'15"  | 176.79' |
| C3          | 97.39'  | 175.00' | 31°53'12"  | 96.14'  |
| C4          | 257.27' | 60.00'  | 245°40'22" | 100.83' |
| C5          | 68.26'  | 40.00'  | 97°46'20"  | 60.27'  |
| C6          | 192.12' | 790.00' | 13°56'01"  | 191.65' |
| C7          | 56.26'  | 175.00' | 18°25'07"  | 56.01'  |
| C8          | 26.76'  | 20.00'  | 76°39'27"  | 24.81'  |
| C9          | 97.86'  | 75.00'  | 74°45'24"  | 91.06'  |
| C10         | 113.93' | 737.00' | 8°51'24"   | 113.81' |
| C11         | 29.00'  | 25.00'  | 66°27'57"  | 27.40'  |
| C12         | 299.33' | 60.00'  | 285°50'31" | 72.35'  |
| C13         | 17.92'  | 25.00'  | 41°04'13"  | 17.54'  |
| C14         | 144.92' | 787.00' | 10°33'03"  | 144.72' |
| C15         | 161.76' | 125.00' | 74°08'36"  | 150.70' |
| C16         | 25.93'  | 20.00'  | 74°16'21"  | 24.15'  |
| C17         | 103.43' | 155.00' | 38°14'03"  | 101.53' |
| C18         | 119.16' | 155.00' | 44°02'55"  | 116.25' |
| C19         | 89.92'  | 155.00' | 33°14'21"  | 88.66'  |
| C20         | 100.68' | 250.00' | 23°04'26"  | 100.00' |
| C21         | 100.68' | 250.00' | 23°04'26"  | 100.00' |
| C22         | 29.98'  | 250.00' | 6°52'16"   | 29.96'  |
| C23         | 45.76'  | 85.00'  | 30°50'44"  | 45.21'  |
| C24         | 49.35'  | 125.00' | 22°37'12"  | 49.03'  |
| C25         | 23.69'  | 125.00' | 10°51'33"  | 23.66'  |
| C26         | 48.16'  | 740.00' | 3°43'44"   | 48.15'  |
| C27         | 71.93'  | 740.00' | 5°34'10"   | 71.90'  |
| C28         | 57.12'  | 740.00' | 4°25'22"   | 57.11'  |
| C29         | 7.33'   | 175.00' | 2°24'01"   | 7.33'   |
| C30         | 54.06'  | 175.00' | 17°41'59"  | 53.85'  |
| C31         | 36.00'  | 175.00' | 11°47'12"  | 35.94'  |
| C32         | 23.77'  | 60.00'  | 22°41'59"  | 23.62'  |
| C33         | 46.13'  | 60.00'  | 44°02'55"  | 45.00'  |
| C34         | 46.13'  | 60.00'  | 44°02'55"  | 45.00'  |
| C35         | 48.88'  | 60.00'  | 46°40'46"  | 47.54'  |
| C36         | 49.31'  | 60.00'  | 47°05'03"  | 47.93'  |
| C37         | 43.05'  | 60.00'  | 41°06'44"  | 42.13'  |
| C38         | 1.16'   | 790.00' | 0°05'03"   | 1.16'   |
| C39         | 62.09'  | 790.00' | 4°30'10"   | 62.07'  |
| C40         | 63.12'  | 790.00' | 4°34'40"   | 63.10'  |
| C41         | 60.27'  | 790.00' | 4°22'16"   | 60.25'  |
| C42         | 5.49'   | 790.00' | 0°23'52"   | 5.49'   |
| C43         | 41.18'  | 737.00' | 3°12'06"   | 41.18'  |
| C44         | 72.74'  | 737.00' | 5°39'18"   | 72.71'  |
| C45         | 109.53' | 60.00'  | 104°35'50" | 94.94'  |
| C46         | 42.24'  | 60.00'  | 40°20'20"  | 41.38'  |
| C47         | 46.13'  | 60.00'  | 44°02'55"  | 45.00'  |
| C48         | 46.13'  | 60.00'  | 44°02'55"  | 45.00'  |
| C49         | 55.30'  | 60.00'  | 52°48'31"  | 53.36'  |
| C50         | 59.14'  | 787.00' | 4°18'19"   | 59.12'  |
| C51         | 60.10'  | 787.00' | 4°22'31"   | 60.08'  |
| C52         | 25.69'  | 787.00' | 1°52'14"   | 25.69'  |
| C53         | 28.92'  | 125.00' | 13°15'18"  | 28.85'  |
| C54         | 50.34'  | 125.00' | 23°04'26"  | 50.00'  |
| C55         | 50.34'  | 125.00' | 23°04'26"  | 50.00'  |
| C56         | 32.16'  | 125.00' | 14°44'26"  | 32.07'  |
| C57         | 37.10'  | 155.00' | 13°42'55"  | 37.01'  |
| C58         | 119.16' | 155.00' | 44°02'55"  | 116.25' |
| C59         | 20.20'  | 155.00' | 7°28'06"   | 20.19'  |

**NOTES**  
1. Benchmark elevations as shown are reference to the National Geodetic Vertical Datum of 1929 (N.G.V.D. 29), and are referenced to the Martin County Benchmark stamped JBS-1 Martin County 1984, elevation 18.333.

2. Bearings refer to the West Right of Way Line of N.E. Savannah Road, having a Bearing of N00°02'34"W

3. All lot lines on curves are Radial unless otherwise noted.

4. Coordinates shown hereon are based upon the North American Datum of 1983/1990 Adjustment, State Plane Transverse Mercator Projection, Florida East Zone, US Survey Feet Units..

5. The National Flood Insurance Program designation as indicated on the F.E.M.A. Map Panel No. 12085C0151 F, Dated October 4, 2002, Locates the parcel in Zone X, subject to any scaling and interpolation factors associated with mapping of this accuracy.

6. In the event that Martin County disturbs the surface of a private street due to maintenance, repair or replacement of a public improvement located therein, then the county shall be responsible for restoring the street surface only to the extent which would be required if the street were a public street, in accordance with county specifications.

**LEGEND AND ABBREVIATIONS**  
 ○ = Set P.C.P. (Permanent Control Point), a Set P.K. Nail with Disk Stamped "ASLAN, Inc. P.S.M. 3336".  
 ⊙ = Set P.C.P. (Permanent Control Point), a Set 5/8" Iron Rod with Cap Stamped "ASLAN, Inc. P.S.M. 3336".  
 ■ = Set Permanent Reference Monument, a Set 4"x4" Concrete Monument and Disk Stamped "ASLAN, Inc. P.S.M. 3336".

NGVD = National Geodetic Vertical Datum

F.E.M.A. = Federal Emergency Management Agency

P.K. Nail = Parker-Kalon Nail

R. = Arc Radius

L. = Arc Length

Δ = Arc Included Angle

Ch. Brg. = Arc Chord Bearing

P.S.M. = Professional Surveyor and Mapper

**NOTICE**  
1. This plat, as recorded in its original form in the public records, is the official depiction of the subdivided lands described hereon and will in no circumstances be supplanted in authority by any other form of the plat, whether graphic or digital. There may be additional restrictions that are not recorded on this plat that may be found in the public records of this county.

PREPARED BY: Eric B. Holly, P.S.M.

**ASLAN, INC.**  
 CONSULTANTS • PLANNERS SURVEYORS  
 LAND INFORMATION SERVICES  
 2440 S.E. Federal Highway - Suite 700  
 Stuart, FL 34994 772.288.4880 Fax 288.0128